



MAIPSE

**Advancing Together: Planning for Long-Term Growth
& Sustainability**

First of it's Kind Legislation Passes in Massachusetts





New Law (MAIPSE) Task Force Established

Task Force/Advisory Board Members Worked Together on Report and Recommendations

Department of Developmental Services

MassAbility

MAIPSE

Institute for Community Inclusion

Department of Higher Education

Council of Presidents Mass State University System

Mass Association of Community Colleges

Mass Association of School Committees


Mass Advocates for Children

Mass Down Syndrome Congress

Advocates for Autism

School Districts

Alumni Students



Board of Higher Education Approves Regulations to Improve Post-Secondary Opportunities for Students with Disabilities

- *All public colleges and universities in Massachusetts are required to provide appropriate resources and supports for students with disabilities who wish to attend college and learn alongside their non-disabled peers.*
 - *Adult agencies supporting adults with disabilities working on guidelines to provide financial support for these students to attend college.*
 - *Campuses encouraged to apply for MAIPSE funding to help plan and implement a MAIPSE Program.*
-

MAIPSE Expectations

Program Growth

Increase School District Partnerships

517 Public School Districts

73 Charter Schools

24 Collaboratives

MAIPSE

122 School District Partners

3 Charter Schools

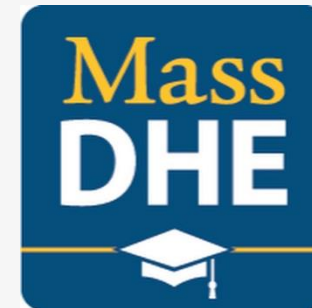
5 Collaboratives

WE HAVE WORK TO DO



Expanding Partnerships

- New legislation will open doors for so many adults with intellectual disabilities who want to continue to learn in college!
 - Get the word out to families
 - Get the word out to students over 21
 - MAIPSE included in Adult Service Agencies meeting calendars



MassAbility



Spreading the Word

Present at Mass Down Syndrome Congress Conference

Present at State-of-the-Art Conference

Present at Southeast Post Secondary Education Alliance

Attend Transition Fairs throughout the state

Providing support to new MAIPSE campuses

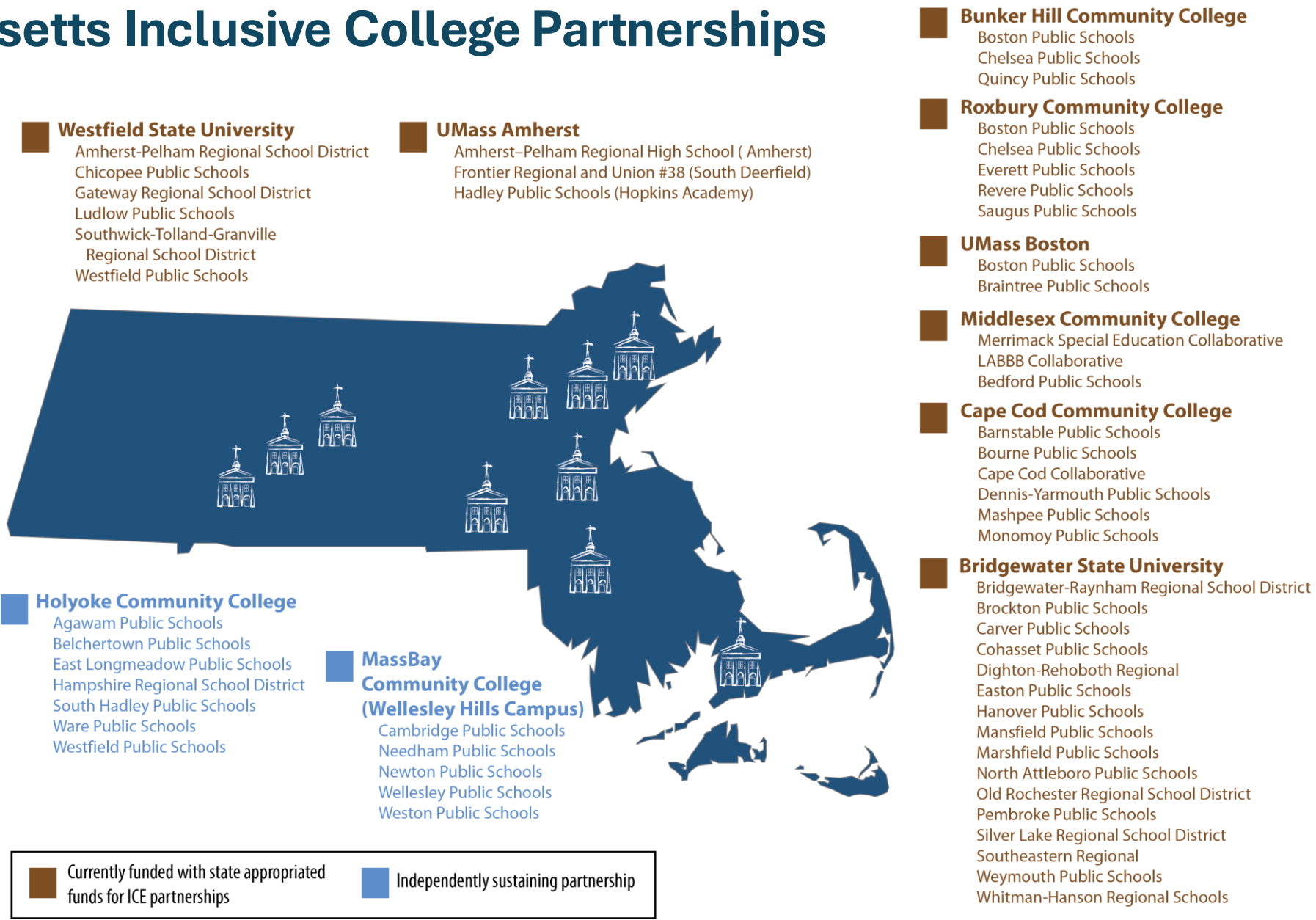
Communicating with campuses who do not yet have MAIPSE

Creation of new MAIPSE Website

Working Together to Increase MAIPSE Throughout the State



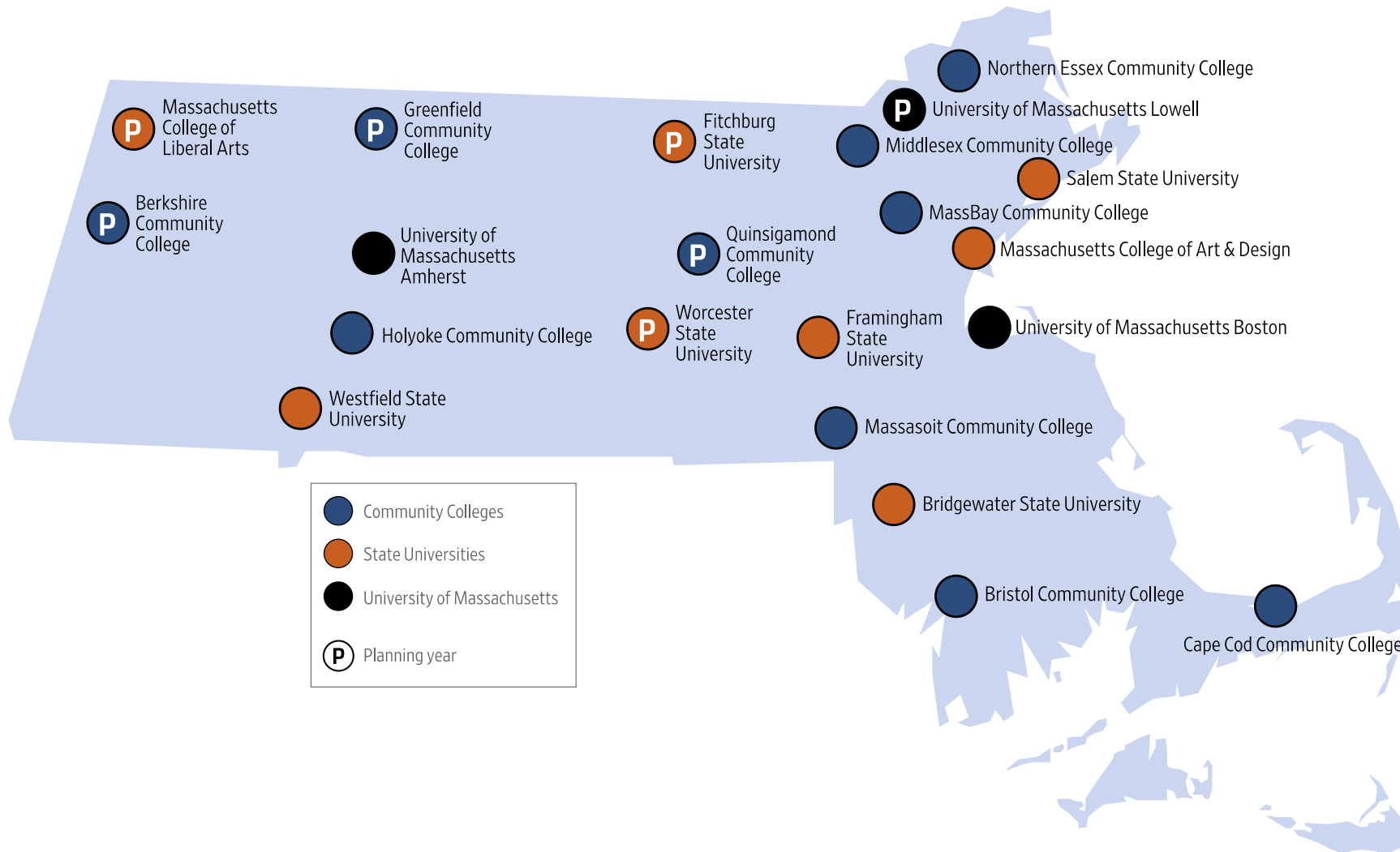
Massachusetts Inclusive College Partnerships





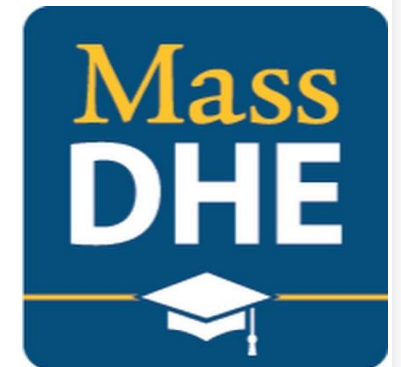
Massachusetts Inclusive
Postsecondary Education
MAIPSE

2024-2025 COLLEGE PARTNERSHIPS



What is MAIPSE Providing?

- ***PARTIAL GRANT FUNDING***
- Onboarding all new partnership staff
- Training for adult service agency staff
- Continued outreach to families, students and educators
- Working with MAIPSE Campuses to gain CTP (Comprehensive Transition Program) status
- Assist MAIPSE campuses with the offering of a university endorsed certificate
- ***Streamlining program fees across all partnerships***
- Work on increasing the number of students with paid employment outcomes
- Increase the number of regional consortia

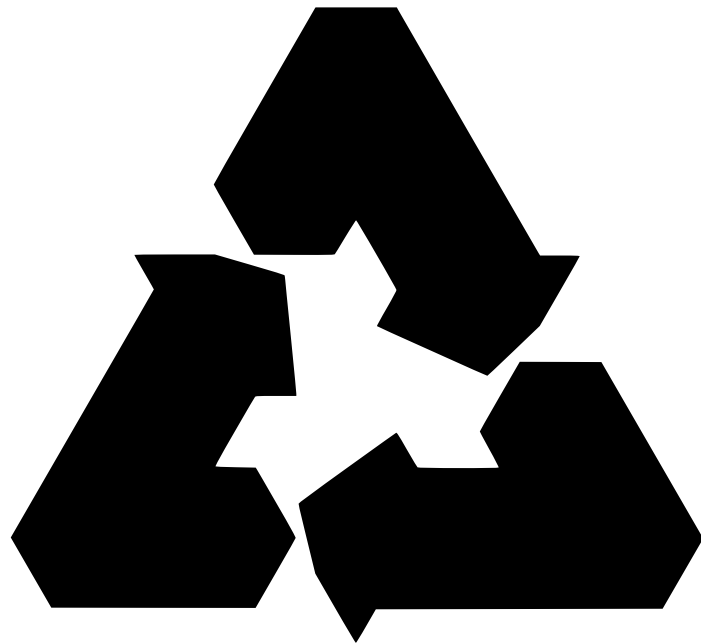


Strategic Planning

Program sustainability requires buy-in, particularly from leadership and the community. This means that the program must have the support and commitment of those who are responsible for making decisions

A graphic with a blue background. In the center, there is a white rectangular box containing the text "SUSTAINABILITY ACTION PLAN" in bold, black, uppercase letters. Behind this box is a large, stylized circular emblem composed of several overlapping circles in shades of green, blue, and purple. A white line forms a diamond shape, connecting four white circular nodes: one at the top, one at the bottom, and two on the sides, partially obscured by the central text box.

**SUSTAINABILITY
ACTION PLAN**



Steps to Self-Sustainability

- Campus leaders must have full buy in and support for the program
- Campus Coordinators should be or have already introduced the program to campus departments – Career Services, Disability Resources, Community Outreach, etc.
- Campus Coordinators should have a budget sheet prepared with program costs, i.e., staffing, books, course costs, etc.
- MAIPSE staff should be teaming up and brainstorming ideas on how to become self-sustained in the future.
- Best first step of self-sustainability is having the institutes of higher education be fiscally responsible for at least one MAIPSE staff member.

Agency Criteria & Funding Opportunities

MassAbility

- Tuition waiver and financial assistance for books & fees for those attending college with the intent of earning a degree
- Must meet financial need threshold and complete FASFA application to receive funding

Department of Developmental Services DDS

- Programs designed specifically for people with intellectual/developmental disabilities with a focus on career exploration and development of job skills
- Certificate program at a college or university
- Auditing a class that is of interest to you (creative writing, early childhood education, photoshop etc.)

MassAbility & DDS

Attending college
with the intent of
earning a degree

Attending a trade
program (HVAC,
graphic design,
etc.)

Associated
career goals

How Do I Obtain Access to DDS Funding Opportunities?

STEP 1

- Reach out to your DDS Support Broker/Service Coordinator for the guidance around the 5300P code and what is allowable.
- They can also provide some suggestions of programs which are typically funded through 5300P.

STEP 2

- Identify a program that meets your needs and will address your employment goals.
- There must be an employment component to the program to apply for funding through 5300P
- Follow up with your Support/Broker/Service Coordinator and request an application to be submitted for review.

STEP 3

- Your Support Broker/Service Coordinator will submit an application to the regional Self Direction Manager for review.

STEP 4

- The regional Self Direction Manager will send the application to the Post High School Education Review Committee at Central Office for approval.
- The committee will review and reach out to your Support Broker/Service Coordinator with any questions.

STEP 5

- The committee will send a decision letter to the regional Self Direction Manager who will then share it with your Support Broker/Service Coordinator.
- You will receive notification from your Support Broker/Service Coordinator on the committee's decision.

STEP 6

- If approved, you have the option of paying the school directly or being reimbursed. If you would like to have DDS pay the school directly, please ensure that there is a W9 on file for them and they are set up as a vendor through the PDP. Your Support Broker/Service Coordinator can help you with this.



How Can MA Department of Higher Education Help?

- Assist in the application process for State funding
- Connect you with experienced coordinators and staff
- Share common drive with document samples
- Connect you with training opportunities at Institute for Community Inclusion at UMASS Boston

Contact Us for Assistance!

Mary E. Price, M.Ed.

Director, Massachusetts Inclusive Postsecondary
Education (MAIPSE)

W 617-994-6905 / **C** 617-418-0496

mprice@dhe.mass.edu

Lyndsey Nunes, Ph.D., MPH

WIPSE Director

Westfield State University

Office: 413-572-8439

lnunes@westfield.ma.edu

